

Anti-Reptin / RUVBL2 Rabbit Monoclonal Antibody
Catalog # ABO15169**Specification****Anti-Reptin / RUVBL2 Rabbit Monoclonal Antibody - Product Information**

Application	WB
Primary Accession	Q9Y230
Host	Rabbit
Isotype	IgG
Reactivity	Human, Mouse
Clonality	Monoclonal
Format	Liquid

Description

Anti-Reptin / RUVBL2 Rabbit Monoclonal Antibody . Tested in WB application. This antibody reacts with Human, Mouse.

Anti-Reptin / RUVBL2 Rabbit Monoclonal Antibody - Additional Information

Gene ID 10856

Other Names

RuvB-like 2, 3.6.4.12, 48 kDa TATA box-binding protein-interacting protein, 48 kDa TBP-interacting protein, 51 kDa erythrocyte cytosolic protein, ECP-51, INO80 complex subunit J, Repressing pontin 52, Reptin 52, TIP49b, TIP60-associated protein 54-beta, TAP54-beta, RUVBL2, INO80J, TIP48, TIP49B

Application Details

WB 1:500-1:2000

Contents

Rabbit IgG in phosphate buffered saline, pH 7.4, 150mM NaCl, 0.02% sodium azide and 50% glycerol, 0.4-0.5mg/ml BSA.

Immunogen

A synthesized peptide derived from human Reptin / RUVBL2

Purification

Affinity-chromatography

Storage

Store at -20°C for one year. For short term storage and frequent use, store at 4°C for up to one month. Avoid repeated freeze-thaw cycles.

Anti-Reptin / RUVBL2 Rabbit Monoclonal Antibody - Protein Information

Name RUVBL2

Synonyms INO80J, TIP48, TIP49B**Function**

Possesses single-stranded DNA-stimulated ATPase and ATP- dependent DNA helicase (5' to 3') activity; hexamerization is thought to be critical for ATP hydrolysis and adjacent subunits in the ring- like structure contribute to the ATPase activity (PubMed:10428817, PubMed:17157868, PubMed:33205750). Component of the NuA4 histone acetyltransferase complex which is involved in transcriptional activation of select genes principally by acetylation of nucleosomal histones H4 and H2A (PubMed:14966270). This modification may both alter nucleosome -DNA interactions and promote interaction of the modified histones with other proteins which positively regulate transcription (PubMed:14966270). This complex may be required for the activation of transcriptional programs associated with oncogene and proto-oncogene mediated growth induction, tumor suppressor mediated growth arrest and replicative senescence, apoptosis, and DNA repair (PubMed:14966270). The NuA4 complex ATPase and helicase activities seem to be, at least in part, contributed by the association of RUVBL1 and RUVBL2 with EP400 (PubMed:14966270). NuA4 may also play a direct role in DNA repair when recruited to sites of DNA damage (PubMed:14966270). Component of a SWR1-like complex that specifically mediates the removal of histone H2A.Z/H2AZ1 from the nucleosome (PubMed:24463511). Proposed core component of the chromatin remodeling INO80 complex which exhibits DNA- and nucleosome-activated ATPase activity and catalyzes ATP- dependent nucleosome sliding (PubMed:16230350, PubMed:21303910). Plays an essential role in oncogenic transformation by MYC and also modulates transcriptional activation by the LEF1/TCF1-CTNNB1 complex (PubMed:10882073, PubMed:16014379). May also inhibit the transcriptional activity of ATF2 (PubMed:11713276). Involved in the endoplasmic reticulum (ER)-associated degradation (ERAD) pathway where it negatively regulates expression of ER stress response genes (PubMed:25652260). May play a role in regulating the composition of the U5 snRNP complex (PubMed:28561026).

Cellular Location

Nucleus matrix. Nucleus, nucleoplasm. Cytoplasm. Membrane. Dynein axonemal particle {ECO:0000250|UniProtKB:Q9DE27} Note=Mainly localized in the nucleus, associated with nuclear matrix or in the nuclear cytosol. Although it is also present in the cytoplasm and associated with the cell membranes

Tissue Location

Ubiquitously expressed. Highly expressed in testis and thymus.

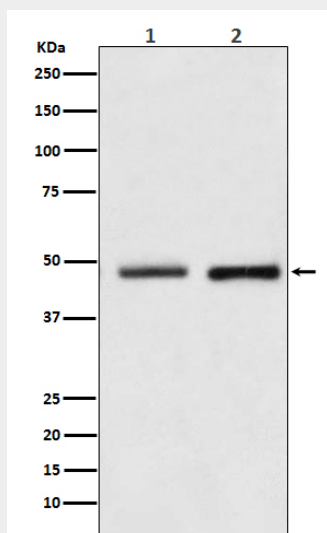
Anti-Reptin / RUVBL2 Rabbit Monoclonal Antibody - Protocols

Provided below are standard protocols that you may find useful for product applications.

- [Western Blot](#)

- [Blocking Peptides](#)
- [Dot Blot](#)
- [Immunohistochemistry](#)
- [Immunofluorescence](#)
- [Immunoprecipitation](#)
- [Flow Cytometry](#)
- [Cell Culture](#)

Anti-Reptin / RUVBL2 Rabbit Monoclonal Antibody - Images



Western blot analysis of Reptin / RUVBL2 expression in (1) HeLa cell lysate; (2) NIH/3T3 cell lysate.